

## SPECIFICATIONS

	N6+ 2"		N6+ 5"	
<b>Distance Measurement</b>				
Range	R10	R15	R10	R15
Reflector	5000m*1			
Reflectorless*2	1000m	1500m	1000m	1500m
<b>Accuracy</b>				
Reflector	±(2+2ppm x D)mm			
Reflectorless	±(3+2ppm x D)mm			
<b>Measuring Interval</b>				
With Reflector	Fine < 0.3s, Tracking < 0.1s			
Without Reflector	0.3s-3s*3			
<b>Others</b>				
EDM Type	Coaxial			
Minimum Reading	0.1mm			
Unit	Meter/ US.Feet/ Int.Feet/ Feet-inch			
<b>Angle Measurement</b>				
Accuracy	2"		5"	
Reading System	Absolute Encoding			
Circle Diameter	79mm			
Minimum Increment	1"/5"			
Detection Method	Horizontal: Dual, Vertical: Dual			
<b>Telescope</b>				
Image	Erect			
Tube Length	154mm			
Effective Aperture	45mm (EDM:50MM)			
Magnification	30x			
Field of View	1°30'			
Minimum Focus Distance	1.2m			
Resolving Power	3"			
<b>Tilt Sensor</b>				
System	Dual Axis Liquid-Electric			
Working Range	±4'			
Accuracy	1"			
<b>Communications</b>				
Communication Ports	USB Port			
Data Interface	USB Stick, Bluetooth			
Effective Range of Bluetooth	10m			
<b>Plummet</b>				
Laser Plummet	±1.5mm at 1.5m			
Optical Plummet (Optional)	Erect Image			
Magnification	3 x			
Focusing Range	0.5m~∞			
Field of View	5°			
<b>Power</b>				
Type	Rechargeable Lithium battery			
Voltage	7.4V DC, 3100mAH			
Operating Time	10 Hours*4			
<b>Level Vials</b>				
Plate Vial	30"/2mm			
Circular Vial	8'/2mm			
<b>Others</b>				
Dust and Water Protection	IP55			
Display	Dual Side, LCD 6 Lines			
Keyboard	Alphanumeric 24 Keys			
Operating Temperature	-20°C ~ +50°C			
Atmosphere Correction	Manual Input, Auto Correction			
Earth Curvature Correction	Manual Input, Auto Correction			
Prism Constant	Manual Input, Auto Correction			
Dimension	190mm x 195mm x 335mm			
Weight (approx..)	5.5kg			

Note: all information above is subject to change without any prior notice.

## STANDARD PACKING LIST

Main unit	1x
Lens cover	1x
Battery holder	1x
Battery LB-01	2x
Tools pouch	1x
Plummet	1x
Manual	1x
Charger LC-10	1x
Reflective sheet	1x
Carry case	1x
Belt	2x

- \*1. Good Conditions: good visibility about 20km, overcast, no scintillation.  
 \*2. Under Kodak Gray (90%). Measuring distance may vary depending on targets and the conditions.  
 \*3. Measuring time may vary depending on measure distance and conditions. For the initial measurement, it may take a longer time.  
 \*4. Battery life specification at 25°C . It might be shorter in low temperature or if the battery is old.

## OPTIONAL ACCESSORIES



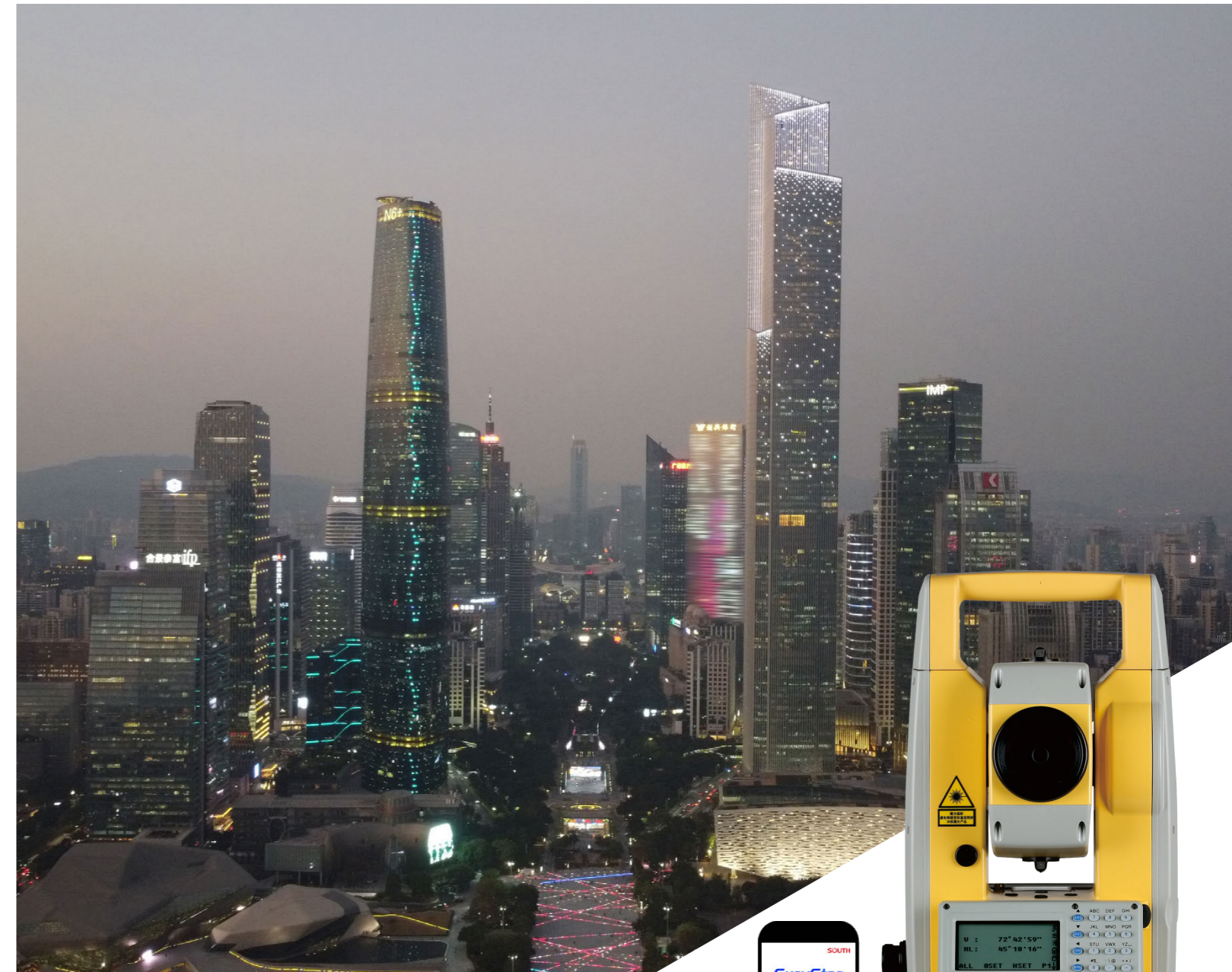
ATS-2 Wooden Tripod  
 NLS-15 Prism Pole  
 TK21T Prism Set

You Local Authorized Dealer

**SOUTH**  
 Target your success

# N6+ Series

## Best-Selling Total Station



- 2" / 5" Accuracy
- Long-Range Prism (5000m) and Non-Prism (1000m/1500m) EDM
- Trigger Key, Hot key for faster operation
- Cable-Free Connection by Wireless Bluetooth or USB Stick
- Bigger internal memory, Save 96000 data block
- Longer operation Time up to 10 hours per battery

**SOUTH**  
 Target your success

**SOUTH SURVEYING & MAPPING TECHNOLOGY CO., LTD.**  
 Add: South Geo-information Industrial Park, No.39 Si Cheng Rd, Guangzhou, China  
<http://www.southinstrument.com>



# What is new for N6+

## Outstanding Performance and Versatile Functions



### New Battery Housing

- Easy to lock and release
- One hand operation



### Trigger Key

- Faster operation
- Trigger in all measurement surface



### Easy Viewing Display

- 6-line with backlight on both faces.
- Easy-to-use 24-key pads with alphabet entry.



### Relocated Tangent Screw

Lock and fine adjustment tangent screw



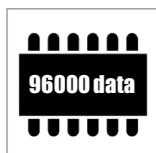
### USB Flash Disk

USB disk for data import & export, more convenient and keep it safe



### New Mainboard

- Processor upgrade to M7. More powerful process ability
- Lower consumption. Longer operation time up to 10 hrs by 1 battery



### Bigger Memory

Up to save 96000 data blocks



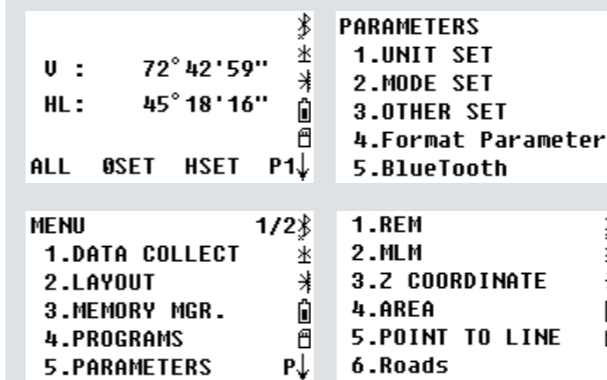
### Easy-to-use Onboard System

New tool-bar design on the side of screen, which helps you check the status of your N6+ Total Station in real-time.

Choose N6+ to meet your topographic needs as a superior mates. It offers a clear-to-view onboard system by it's easy-to-use but powerful programs.

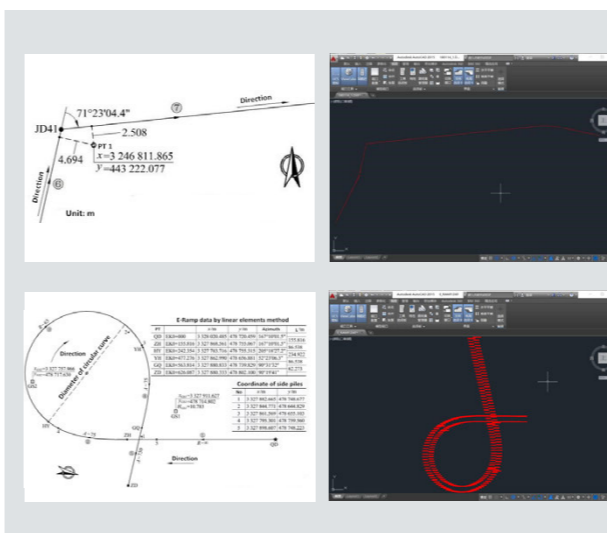
Such as:

- ▶ Offset: angle, distance, column offset
- ▶ Point to Line: to calculate the coordinate of occupied point based on a known point and line
- ▶ COGO: calculation of coordinate geometry



### Optimized Road Program

The optimized road program offers a smart solution for road designing, editing and laying out. The new road program will calculate the horizontal and vertical curve in arbitrary geometric curved algorithm.

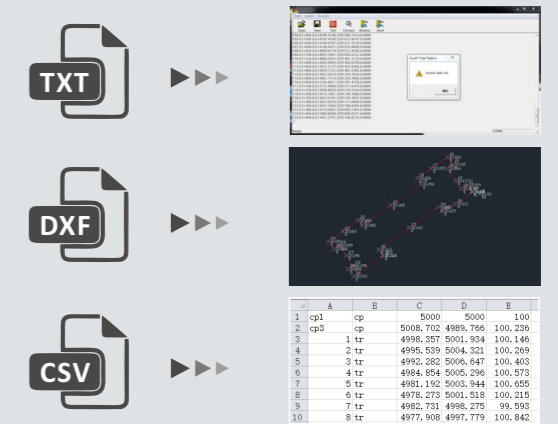


### New Hot Key Functions and BT Data Transfer

12 number key, 12 short path directly enter the application, less operation steps and higher efficiency.

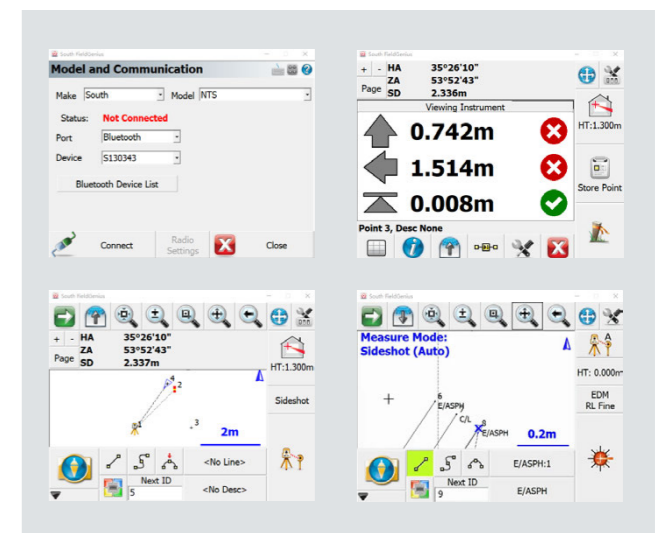
Cable free data transfer work with transfer software, one key export to USB stick, generate TXT, CSV, DXF files.

7 STN Setup	8 BS by XYZ	9 BS by Angle
4 Resection	5 Create new job	6 Select XYZ call file
1 Memory manage	2 View meas file	3 View XYZ file
0 Stake Out	• Tilt	- Data



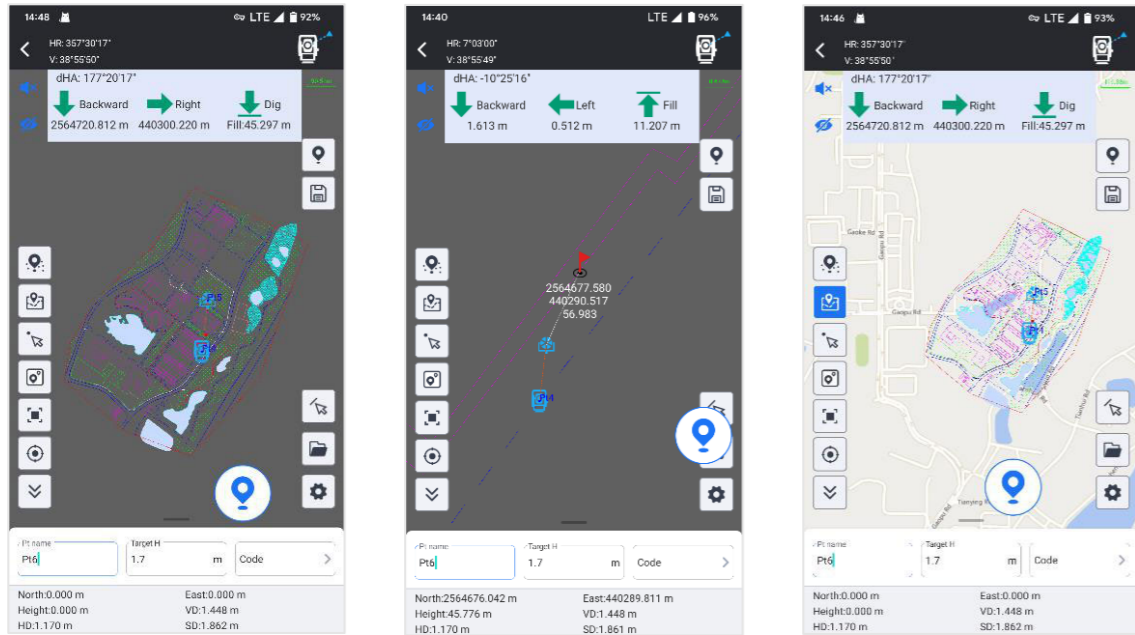
### Work on Data Collector

After added the Bluetooth module on N6+, you will have more possibilities to extend the applications on Total Station. With open source commands, you are easy to establish the communications between the N6+ and other software you wish to use.



# Total Station Module of SurvStar App: Four Main Features to Give You More Power & Freedom

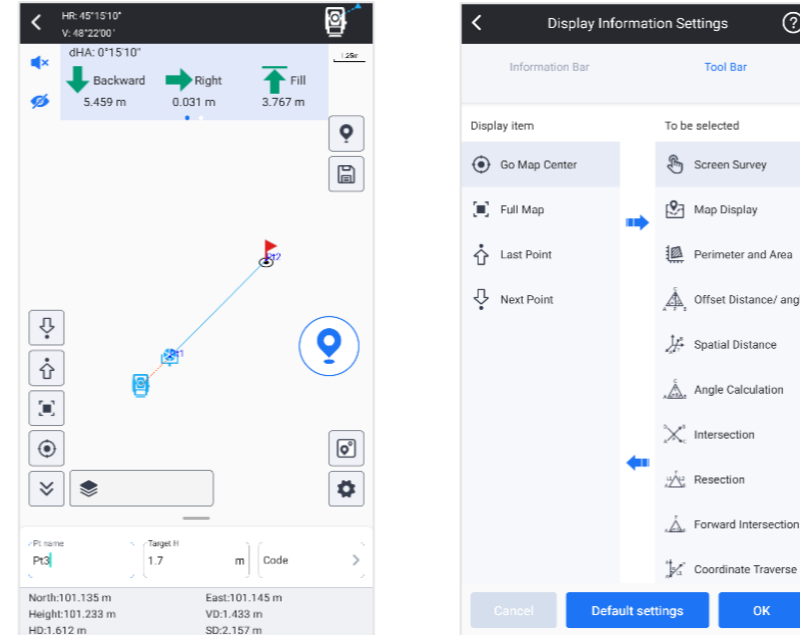
## CAD Stakeout: Increasing Productivity & Decreasing Error



CAD Stakeout allows you to import CAD basemap and stakeout it, without input point coordinates one by one.

When you need, you can connect to your local online map and overlap it to CAD basemap, to increase the precision of your job.

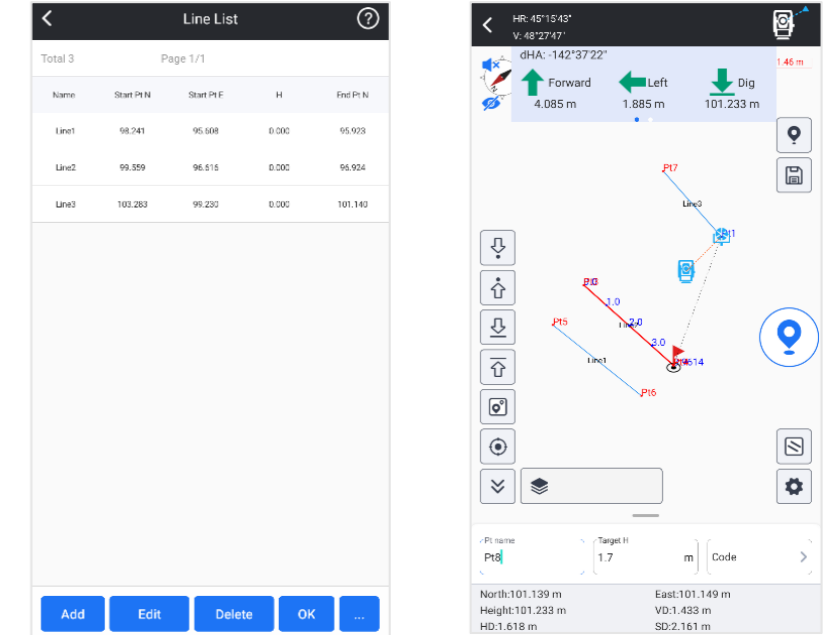
## Point Survey & Stakeout: More Ease and Convenience



With graphic display, now it is easy to you to observe the relation between occupied point and target points. It will help you to make less mistakes when measuring many points.

The stakeout program screen displays information more completely, indicates target points more intuitively, your workflow will be smoother than before.

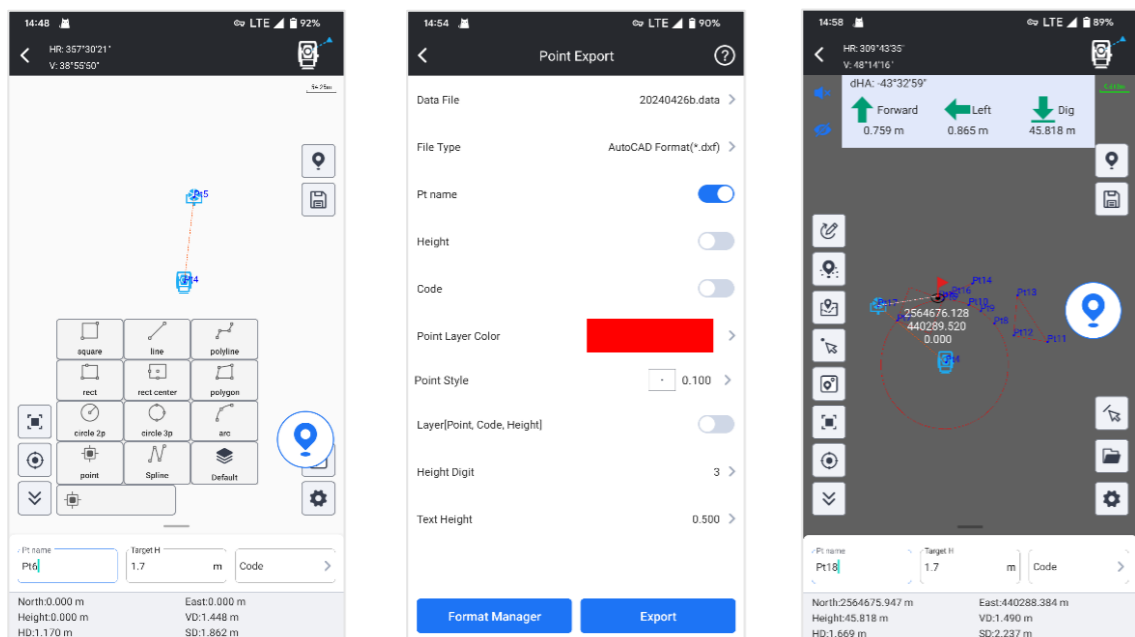
## Line Stakeout: Smarter than Traditional Way



User is allowed to manually choose points from library, line will be formed by program automatically. Then user input interval distance, setout points will be calculated out and displayed on screen.

This function is suitable for road or other objective that is containing lines.

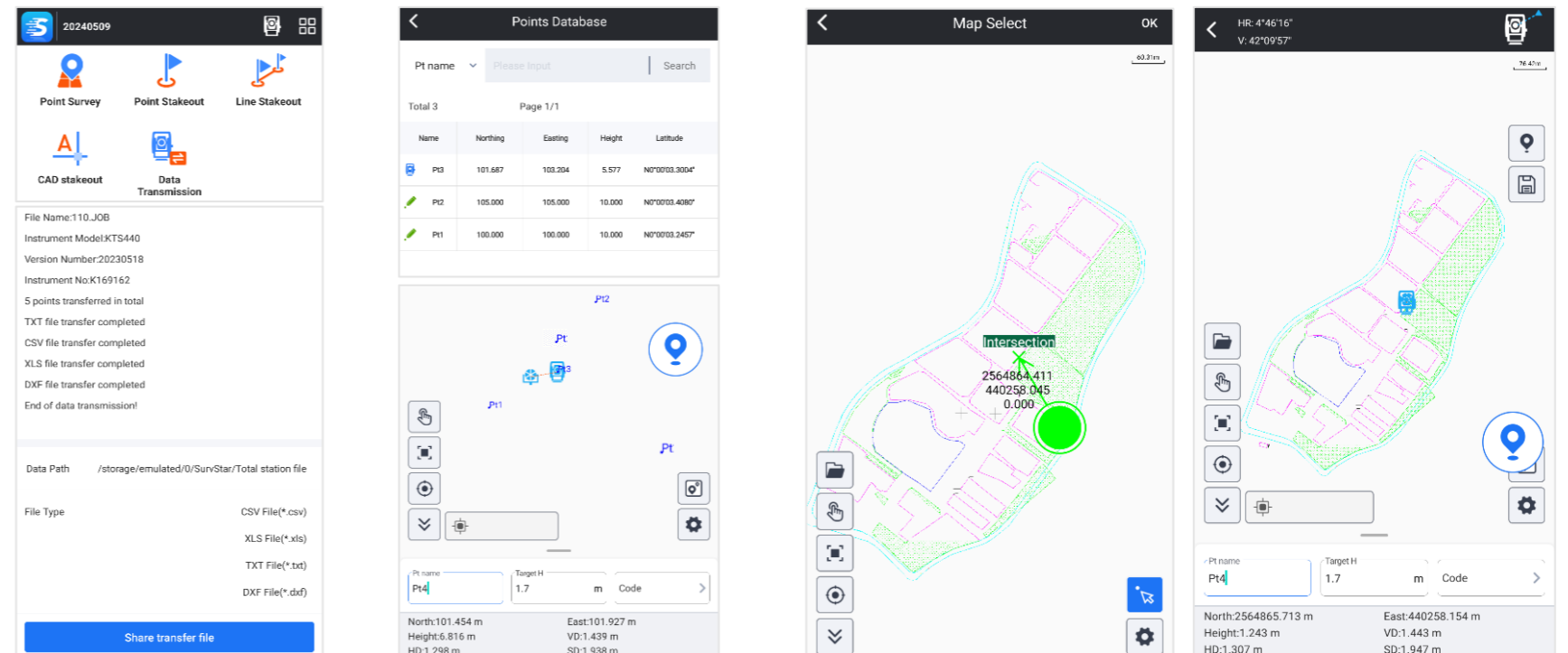
## Measure & Draw: Save Time in Both Field work and Indoor Work



User is allowed to draw line, polygon, circle...up to 11 kinds of graphic, while measuring target points. No need to manually draw draft map anymore.

User is allowed to manage different objectives as different layers. The draft map can be saved and output in CAD format, and to be used in indoor works.

## Other Features: More Innovation, No Limitation



Download & Share (.csv, .dxf, .txt, .xls)

Resection

Set Occupied Point from CAD basemap or Graphic Map

## Other Modules of SurvStar App: GNSS, Marine Survey, 3D Laser Scanner...